



H&G HOUSES

COURTYARD GARDEN The rear walls and extension are built with bricks salvaged from demolished additions to the terraces. The owners, Michael and Angela Kelly, cleaned each one by hand before reuse. The shiplap spotted gum cladding was sourced from Jaks Timber & Joinery Specialists and Provans Timber. Basalt pavers, RMS Natural Stone & Ceramics. Outdoor dining setting, Jati Furniture. Cheminées Philippe combustion stove, Wignells Heating & Cooking. **STREET ENTRANCE** A pair of weeping cherry trees (*Prunus 'Snofozam'*) strengthens the connection between the terraces.

132 | AUSTRALIAN HOUSE & GARDEN

TWO BECOME ONE

When the twin to their beloved terrace came on the market, one Melbourne couple jumped at the chance to double their happiness.

STORY *Stephen Crafti* | PHOTOGRAPHY *Willem-Dirk du Toit*



H&G HOUSES

“A ‘less is more’ approach has made the property feel much larger than it is.”

TOM CARROLL, ARCHITECT



DINING Wing Lux dining setting by Kiyoshi Sadogawa for Conde House, Apató. Skygarden pendant light by Marcel Wanders for Flos, Euroluca. Basalt floor tiles, RMS Natural Stone & Ceramics (throughout). The rug is part of the owners' existing collection. **KITCHEN** Pietra Grey marble benchtops. KWC 'Eve' kitchen mixer, E&S. Normann Copenhagen 'Amp' lamps, Make Designed Objects. Erick Buch 'Model 61' stools, Great Dane. Joinery by Fletcher Cabinets. The timber cabinets are walnut, the polyurethane joinery is in Dulux Ceylonese. Appliances, V-Zug.



Viewed from the street, this house in Melbourne's inner north appears as twin Victorian-era terraces. Step beyond the front door, however, and there's no doubt it's all one perfectly harmonious home. "The owners, Michael and Angela Kelly, were living in one of the properties and took the opportunity to buy the neighbouring one when it came on the market," says architect Nelson Riofrío of Riofrío Carroll Architects (RCA). Nelson and RCA co-director Tom Carroll worked closely to unite the single-storey terraces plus add a second level that is hidden from the street.

Given heritage restrictions and the fact that the terraces were in relatively good condition, the facades and front rooms of both were retained. Beyond this section, the house was demolished, removing unsympathetic extensions dating from the 1950s and the 1970s.

The terraces, comprising four separate rooms (two in each), were reworked to accommodate bedrooms with ensuites on either side of a central corridor. The bedroom to the left of the hall, the Kellys' son's, has doors at either end - one to the street (a former entry) and the other to a courtyard. "This arrangement is designed to allow him greater autonomy as he gets older," says Nelson. Many of the home's period features, including its decorative archway in the passage, were restored as well.

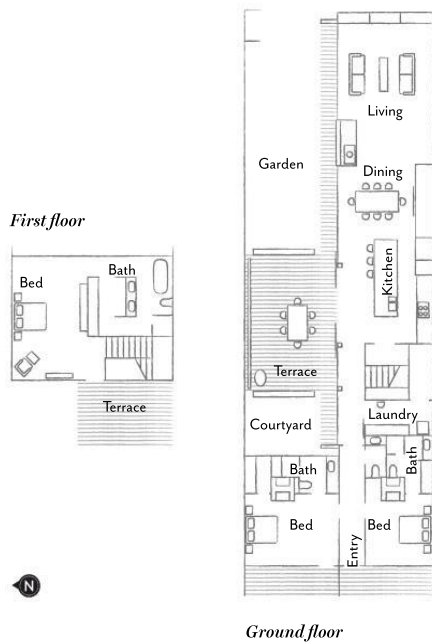
Open the leadlight door that marks the boundary of the Victorian structure and you could be forgiven for thinking the two homes were always one. An extension to one of the terraces to accommodate a flow-through kitchen, dining and living spaces carved out room for green space and an entertaining terrace behind the other. Full-height glazing along the north wall of the ground-floor extension connects house and garden beautifully. "The front of the block faces west, so getting sufficient light into the house was one of the most challenging aspects of this project," says Nelson.

The kitchen and outdoor areas were critical for Michael and Angela, who are keen cooks and entertainers. Tom and Nelson designed a 1.2x3.2-metre marble-topped island at the heart of the space, complemented by floor-to-ceiling joinery along two walls. This joinery, too, is zoned: the appliances are integrated into a section clad in walnut veneer, while the majority of the storage is contained in cabinetry finished in Dulux Ceylonese. A lightwell at the southern boundary of the dining area - located between the kitchen and living room - boosts the overall brightness of the ground-floor extension.

To meet the Kellys' request for a spacious main bedroom suite, Nelson and Tom designed a contemporary first-floor addition that is concealed from the street by the terraces' original decorative parapets. Clad in shiplap spotted gum, it is sited perpendicular to the ground-floor structure and cantilevered ▶



THE LAYOUT



3.5 metres above the garden, which created cover for the terrace too. “Since there is glazing along the north and south walls downstairs, the arrangement of the upper level ensures daylight flows through to the main living areas unobstructed,” says Tom.

The orientation of the first-floor extension opened up another opportunity: the ability to capture views of Melbourne’s city skyline to the west. To achieve this, Nelson and Tom created a rooftop garden that’s accessed from the main bedroom; it has since become a favourite place for Michael and Angela to sit and unwind as the sun sets.

Although the contemporary extension is in clear contrast with the Victorian terraces in terms of its architecture - a strict condition of heritage regulations in this area - nothing jars. That’s due, in part, to the Mid-Century aesthetic that runs through the interior, a unifying thread between old and new. All of the furnishings, including built-in joinery, are clean-lined and elegant. “Post-renovation, the home is about 280 square metres on a 350-square-metre block. That’s relatively big for this part of Melbourne, but the ‘less is more’ approach has made the property feel considerably larger,” says Tom.

It’s not often that homeowners have the opportunity to buy the house next door to gain more space. But for Angela and Michael, it was a chance worth taking; they now have a property that’s bigger, more liveable and beautiful too. ▶

Riofrío Carroll Architects, Melbourne, Victoria; rcastudio.com.au.



STAIRWELL *Above left* The artwork is a poster by Richard Drew. Amp lamps, Make Designed Objects. Oak flooring, Oslek Flooring.
MAIN BEDROOM AND ENSUITE *Above right and this image* Artwork by David Bromley. Wing Lux low table by Kiyoshi Sadogawa for Conde House, Apato. Kai Kristiansen 'Paper Knife' chair and footstool, Great Dane. Tolomeo floor lamp, Artemide. Vertical Bookcase, Sogar. Kaldewei 'Classic Duo' bath, E&S. Basalt floor tiles, RMS Natural Stone & Ceramics. **LIVING** *Opposite* The artworks are tribal pieces from Papua New Guinea. Wall units designed by RCA, made by Fletcher Cabinets. Wing Lux sofas by Kiyoshi Sadogawa for Conde House, Apato. 500 Table by Finn Juhl, Great Dane. Tolomeo Mega floor lamp, Artemide. Haiku ceiling fan, Big Ass Fans.



THE PALETTE

Dulux Ceylonese (kitchen joinery)

Dulux Antique White USA
(main walls, throughout)

Pietra Grey marble (kitchen bench)

THIS IS THE LIFE

Sustainability was so important to Michael and Angela that the demolition work was done by hand rather than machine to minimise damage to the bricks. The couple then cleaned and stacked the bricks themselves before they were reused to build the extension. Time-consuming, for sure, but that care has delivered a home with character and soul in spades.



COURTYARD The frame-like timber eaves shade the interiors from the hottest northern sun and join up with a small deck that forms extra seating when the family is entertaining. The west-facing roof terrace, featuring laser-cut steel balustrades, is a favourite spot for 'me time', especially in the evening. Carpentry by Highwill Constructions (throughout).



1

THE SOURCE

Pieces inspired by Mid-Century design meet the twin objectives of form and function.



Produced by Saffron Sylvester. Paint colours are reproduced as accurately as printing processes allow.

1 Muuto 'Grain' pendant light, \$305, Living Edge. 2 Riva 1920 'Boss Executive' bench, from \$6449.65, Fanuli. 3 Greenway Crackle S3 pendant light, \$2310, A Design Studio. 4 Eon Sans S1 pendant light, from \$685, A Design Studio. 5 Woodland 'Nancy' stool, \$450, Globe West. 6 Oiva 8.5cm plate, \$25, Marimekko. 7 Morphy Richards 'Accents' 1.5L pyramid kettle, \$149, Harvey Norman. 8 Australian House & Garden acacia salad servers, \$19.95/set, Myer. 9 Rén lounge chair by Stellar Works, \$2515, Living Edge. 10 Opinion Ciatti 'Original Ptolomeo' bookcase, \$1135, Space. *For Where to Buy, see page 188.* H&G